



## Lowbed semitrailer 45 ton

### Technical specification

Empty Load of lowbed	14/15 Ton
Lowbed Capacity	45 tons
Total Length of lowbed	14000 mm
Length of loading Surface	10500 mm
Length of neck	3500 mm
Width of lowbed	3000 m.
Platform Height	1300 mm
Mother Chassis	Chassis made from 20 mm st 52-3
King Pin	Capacity: 20.000 kgs 3 ½ inch mounted on 10 mm St 52-3 steel sheet flange. Jost type or equivalent with sliding plate and interchangeable. Reinforced pick up plate.
Floor of Lowbed	Chequered plate 6 mm and 8 mm steel plates with 40x20mm flat bars welded on.
Tilting drop sides	Removable and interchangeable tilting drop side boards hinged at low, made in corrugated steel 3 mm, 5 for each side, 800 mm height, provided with two safety locking handle
Axle	3 axles , heavy duty type axles "VB" type, leaf spring underslung suspensions, 18 ton capacity , 12 layer, 12 mm
Suspension	Spring (Mechanical) suspension. Heavy duty.
Tires	12 + 2 with rims 8.5 x 20"
Tires Size	12.00 R 20 bridgestone,Pirelli or equivalent.
Ramp	2750 x 800 mm hydraulic , covered by checkered steel
Landing gear	Two speed mechanical operation telescopic. Heay duty type , Secured by chains.
Brakes	Two line pneumatic brake systems, -the brakes are air actuated with load sensitive device. With parking brake manual operation

#### ELECTRICAL SYSTEM

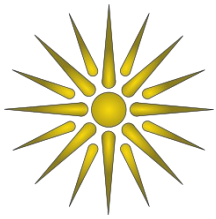
- 24 volt electrical outfit according to iso standard.
- red reflectors one each sides with 5 side markers
- with all wares and harnesses of best quality , long life and according to international regulations.
- combined rear lines including stop light , direction indicator(doubles)
- license plate lights.

#### Paint (Colour)

After sand blasting , two coat of antirust paint then 2 layer (Coat) of high quality paint, colour you prefer.

#### Accessories

- Water tank
- 2 Spare tires



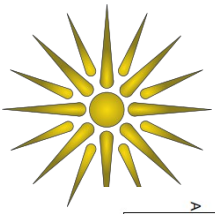
# *Dmix International*

- Tool box
- First aid kit
- Fire extinguisher with 5 kg
- Warning triangle
- Rear mudguards
- Wheel spanner
- 6 tie down rings on each side
- 2 tie down rings at front
- 2 tie down rings at rear
- Chains for binding
- Steel hooks welded on both sides of trailer body
- Hooks and twist for load tying
- 2 spare wheel with carriers beside gooseneck

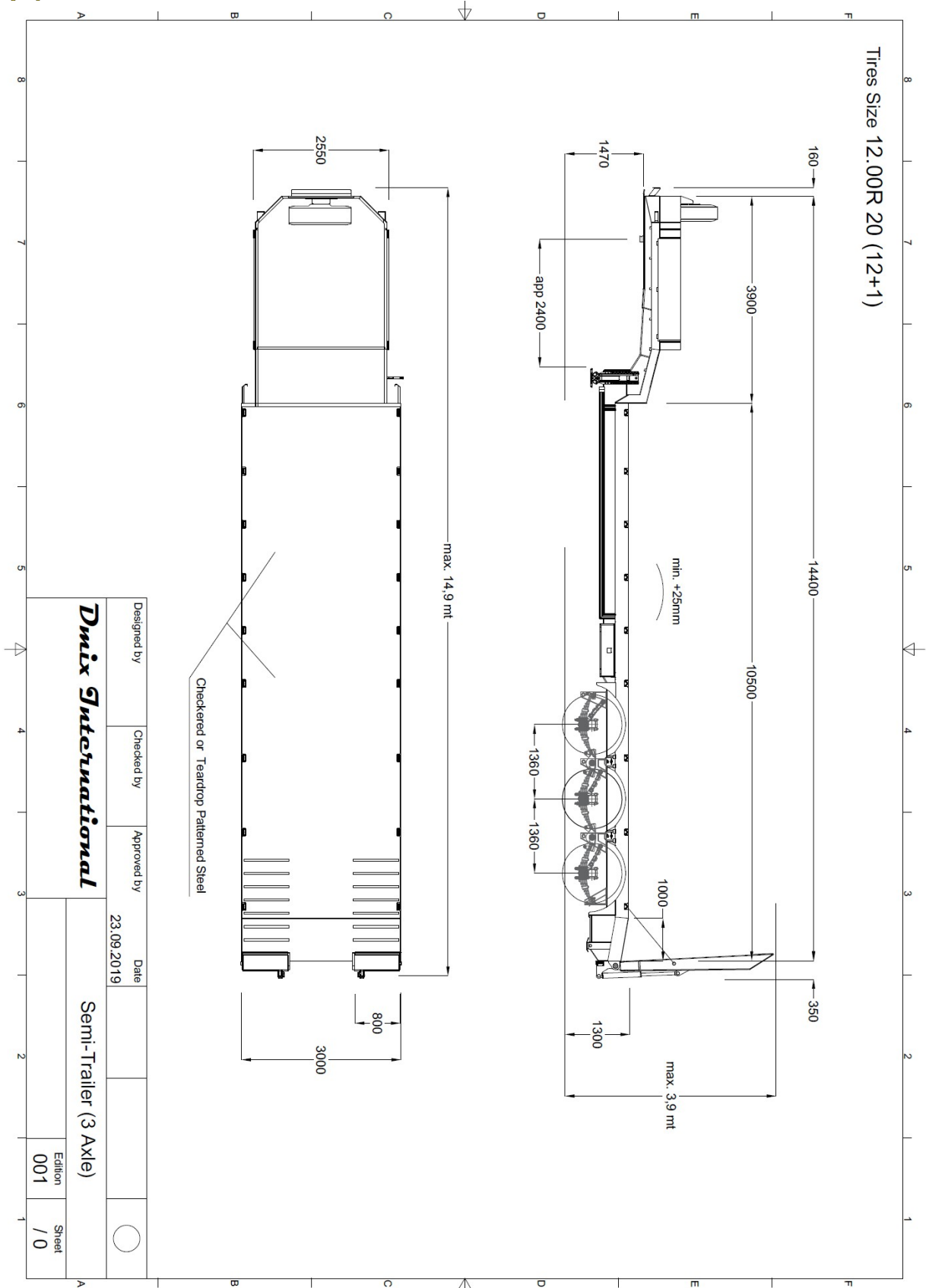
***Dmix International*** S.p.A.

Viale Enzo Paolo Tiberi n° 8, 06124 PERUGIA (PG)

C.F./P.IVA 03610350542 REA PG301726



# Dmix International



**Dmix International S.p.A.**

Viale Enzo Paolo Tiberi n° 8, 06124 PERUGIA (PG)

C.F./P.IVA 03610350542 REA PG301726